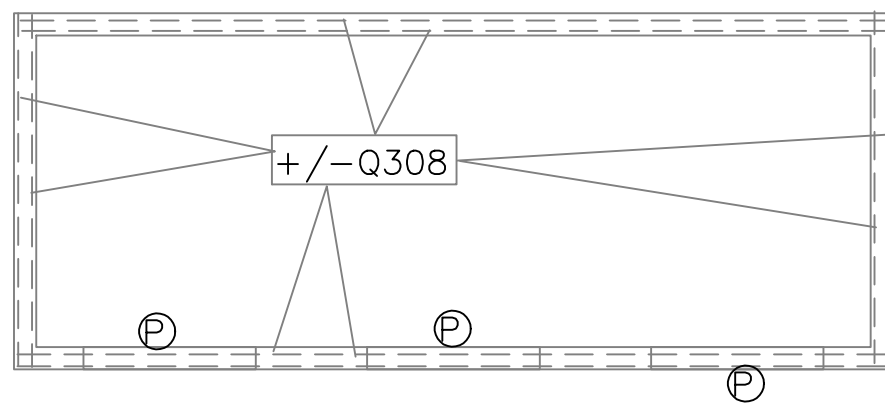


ORTOPEDSKA BOLNIŠNICA VALDOLTRA
NOVA TRANSFORMATORSKA POSTAJA
št.p.: 15/15

AB STENE PRITLIČJA $d=20\text{cm}$

Dolžina podaljšane kine te je $L=4,00\text{m}$
deb.plošč in sten = 20cm

AB stene $H=5,00+0,25+0,60\text{m}$ $L=40\text{m}$ (upoštevane tudi obodne stene)
armatura MA+/-Q308

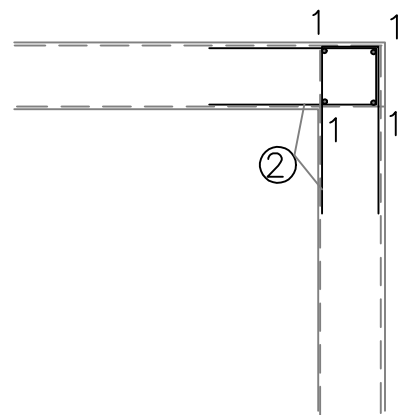


AB stene $H=3,00+0,25\text{m}$ $L=21,0\text{m}$
armatura MA+/-Q308
zaključki so enaki

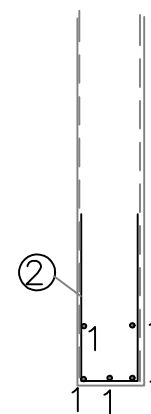
mreze MA

A Q308, 220×600 , kom=44
B Q308, 220×310 , kom=24

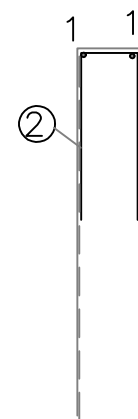
vogali, križanja



Ⓟ preklade vrat



zaključek parapeta



RA ① +/-2 fi 14, $L=6,00\text{m}$, kom= $4 \times 10 + 5 \times 3 + 2 \times 9 = 75$

RA ② fi 8/15cm, $L=1,10\text{m}$, kom= $38 \times 5 \times (2+3) + 400 = 1350$

