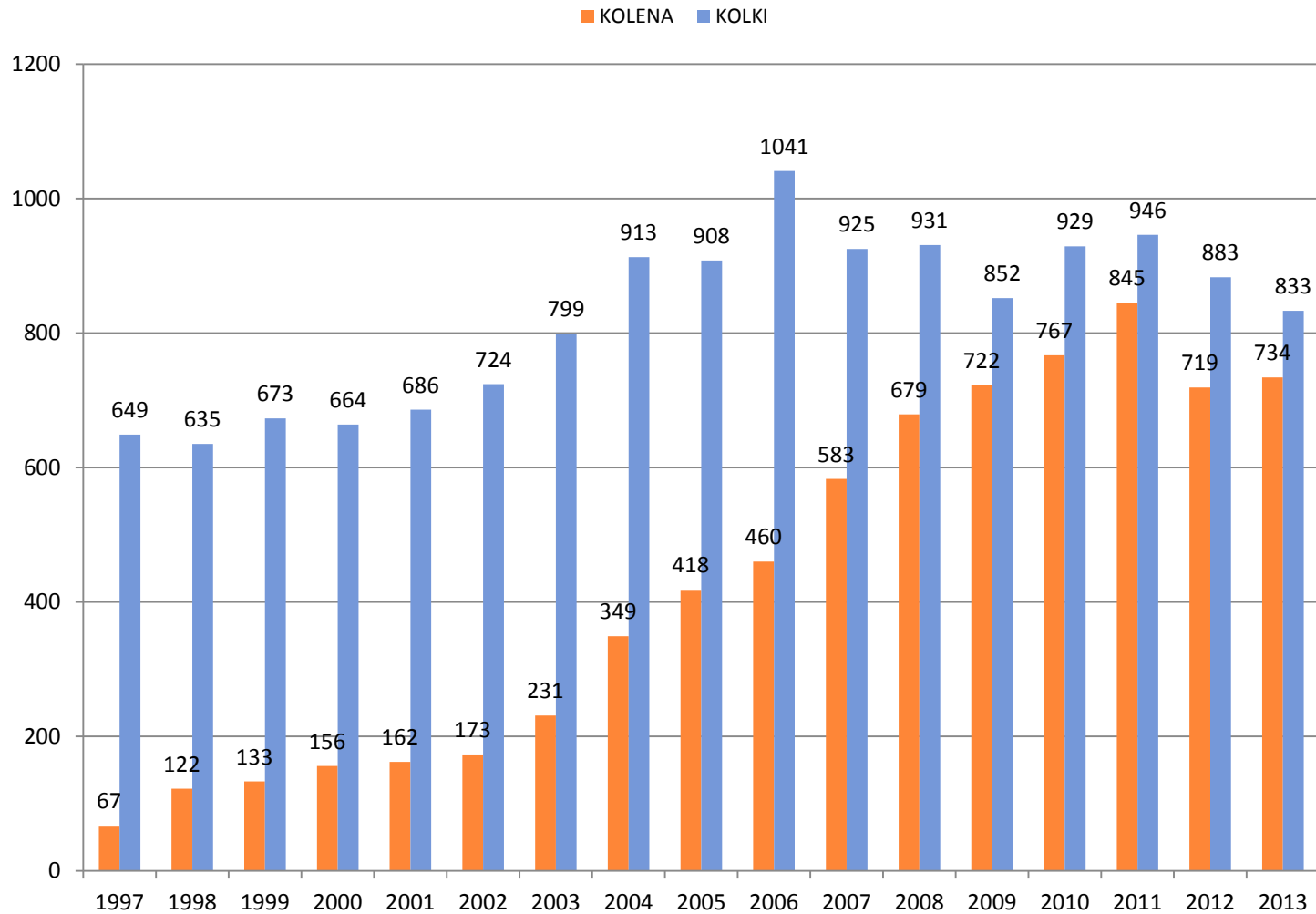




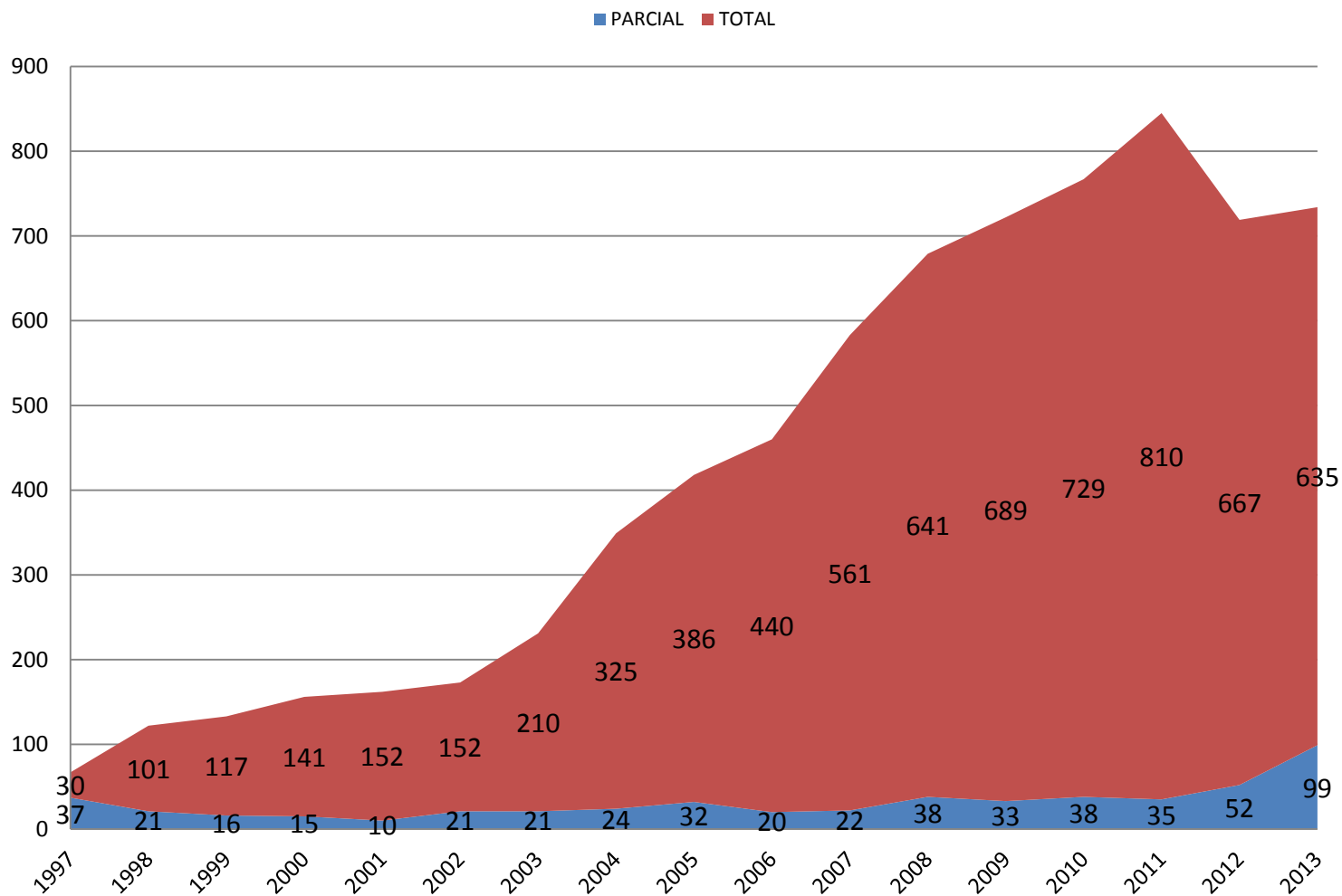
Valdoltra Knee Arthroplasty Registry 2002 - 2013

Vesna Levašič
Ingrid Milošev
18th December 2015

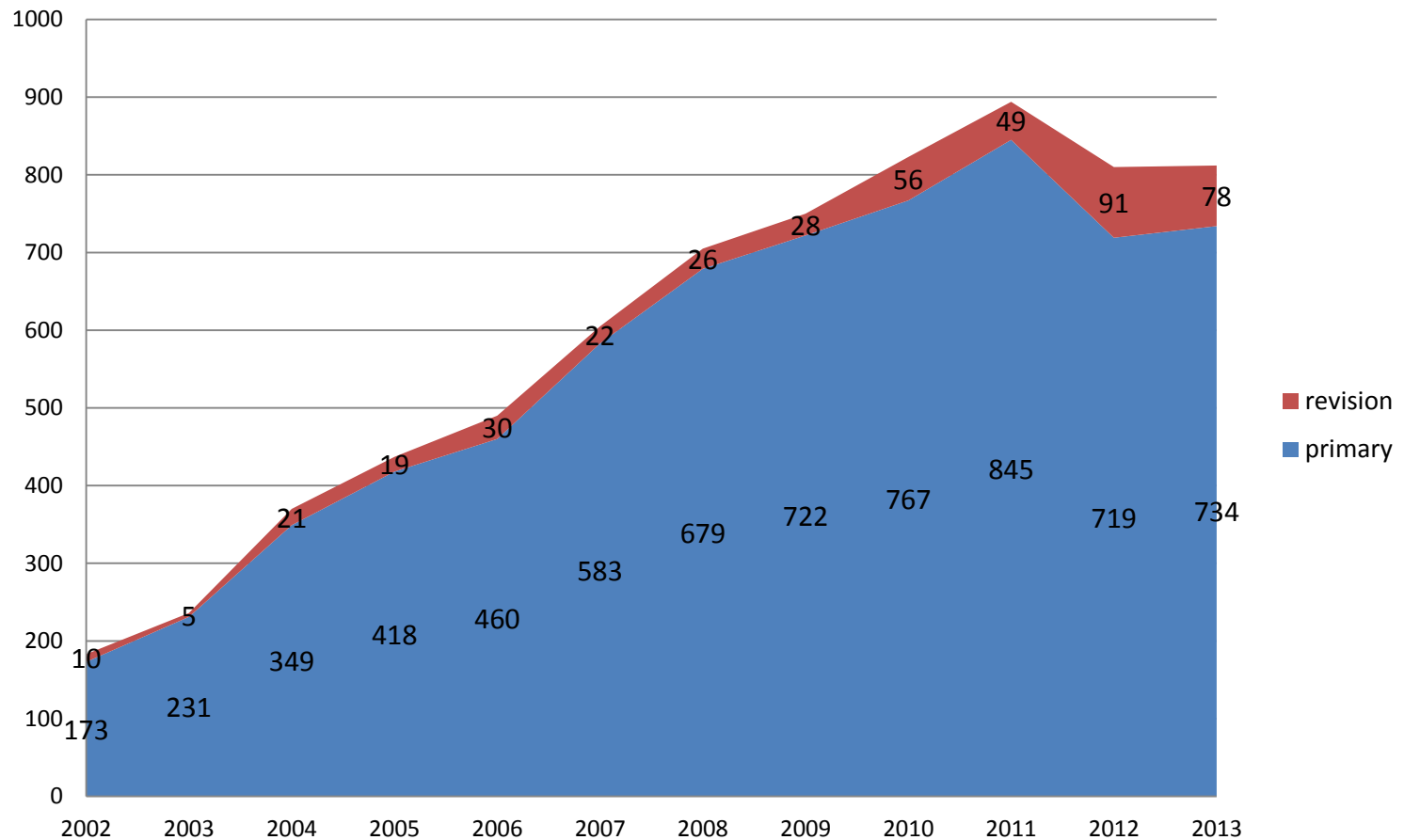
Primary Hip vs. Primary Knee Joint Replacement



Total and Partial Knee Joint Replacement

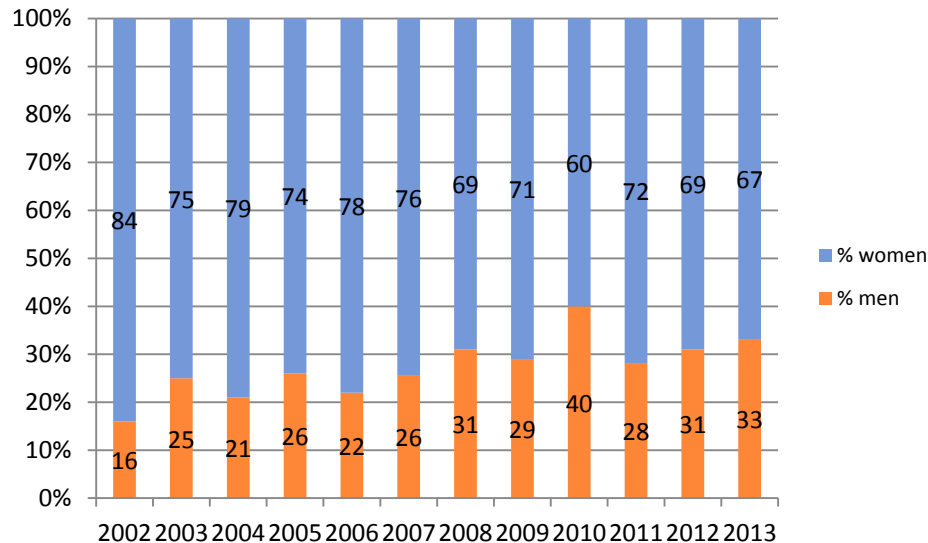


Primary vs. revision knee replacement

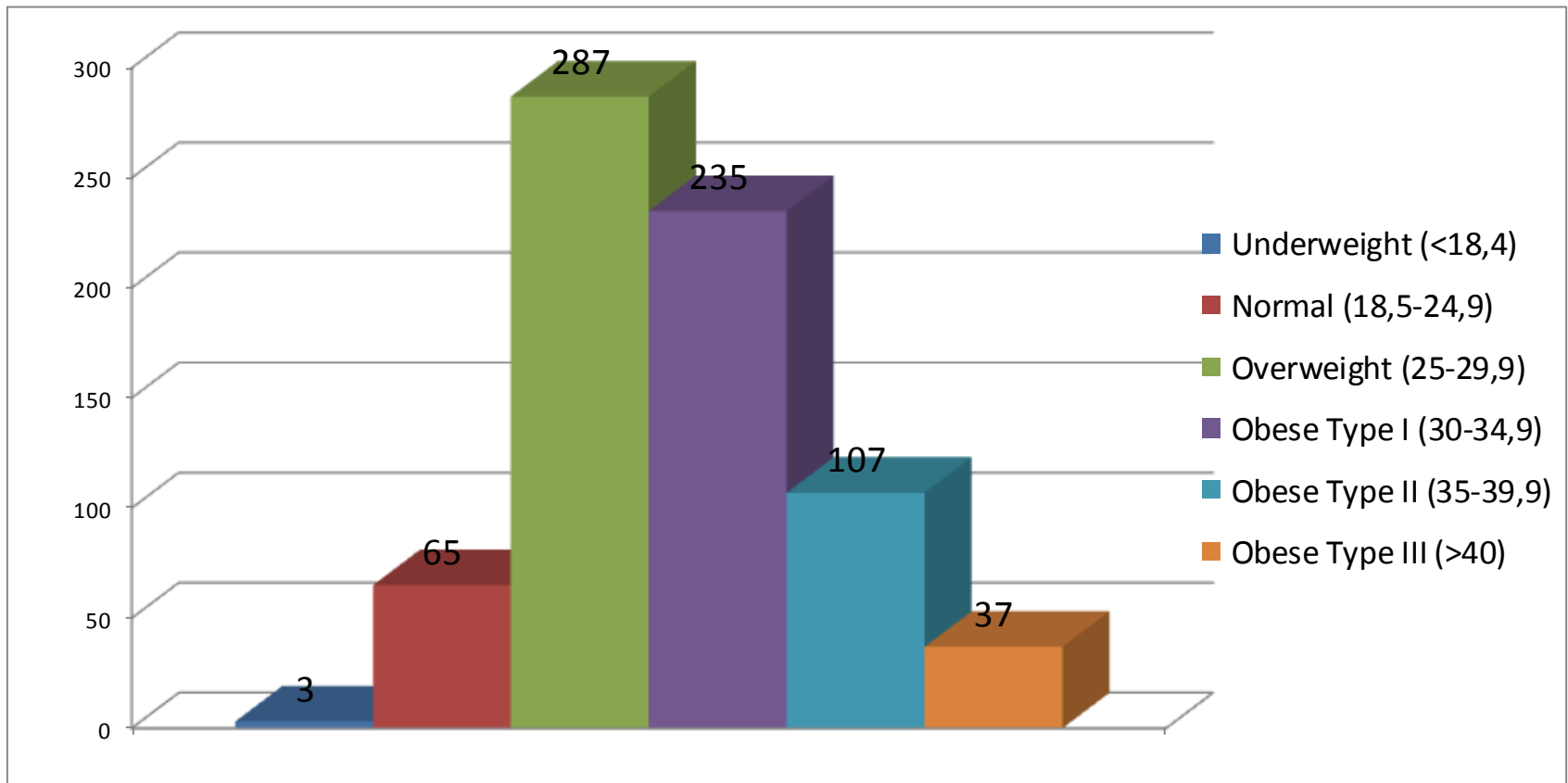


Patient data: age and gender

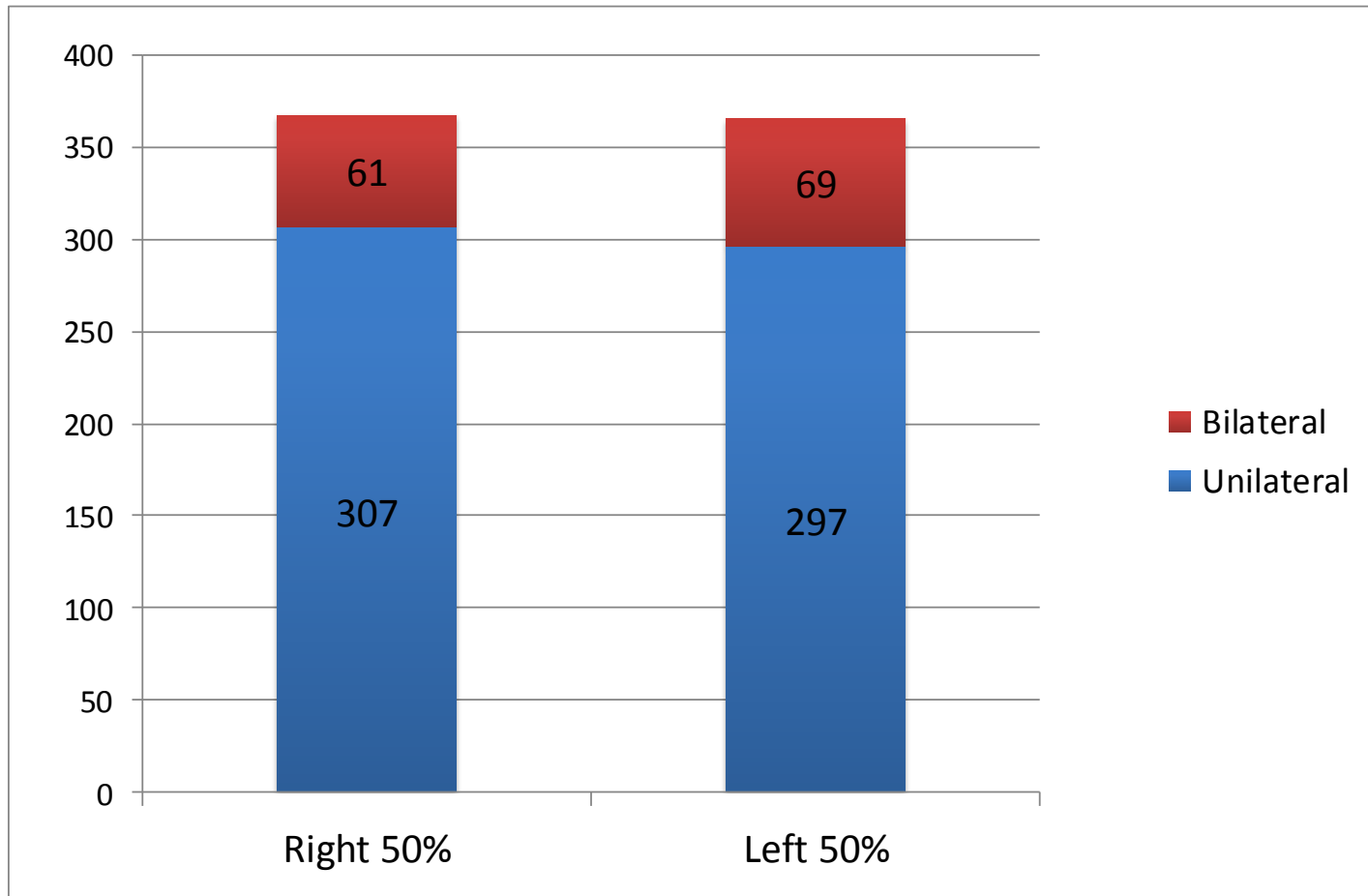
	Men	Women
2006	67 (40-80)	70 (43-84)
2007	69 (51-87)	71 (27-87)
2008	68 (40-85)	70 (32-87)
2009	68 (43-83)	71 (41-88)
2010	67 (33-86)	69 (40-87)
2011	67 (27-90)	70 (34-90)
2012	67 (41-82)	70 (48-89)
2013	67 (36-87)	70 (47-89)



BMI of patients in 2013: average 30,8; min 16,5; max 57,1

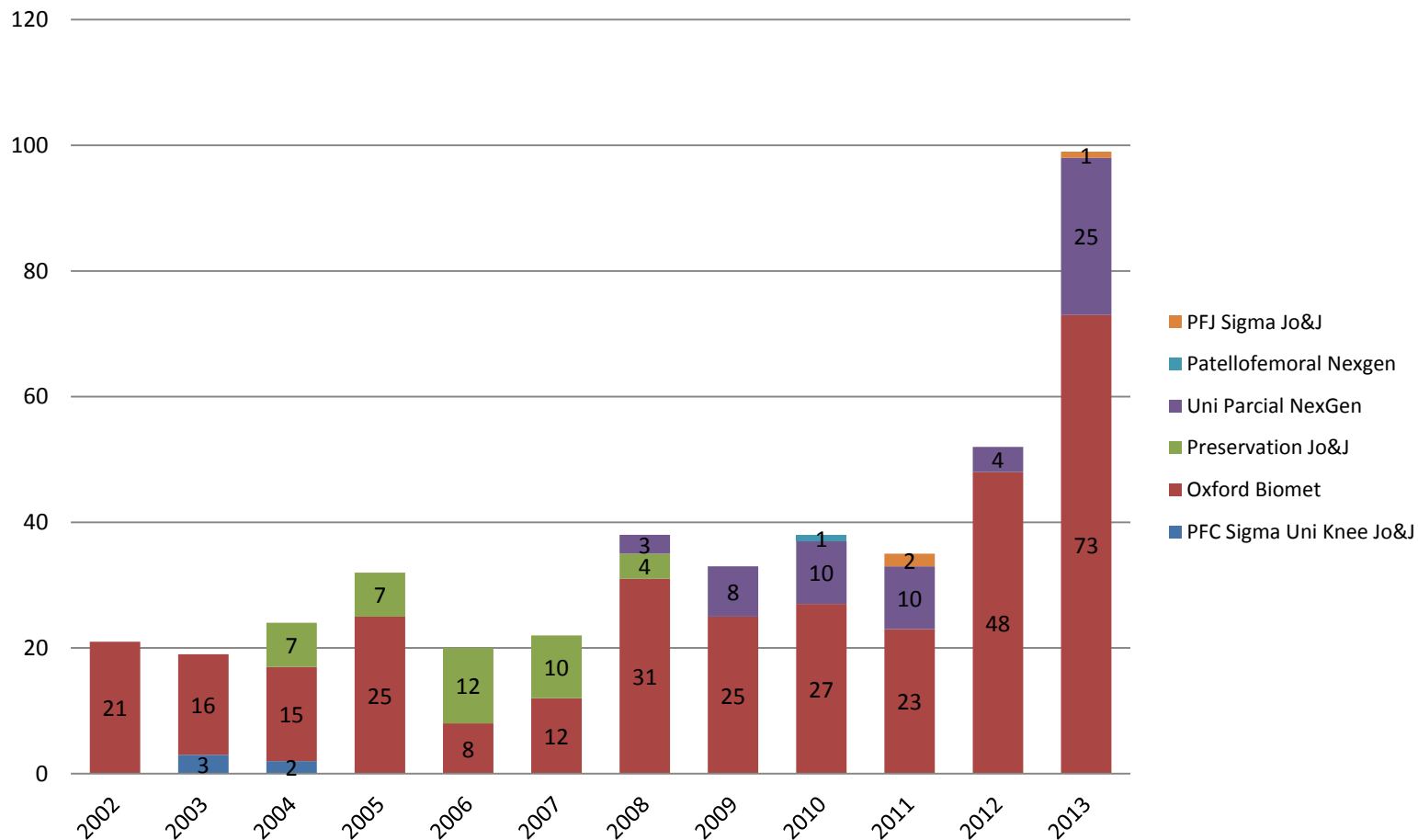


Side of operated knee

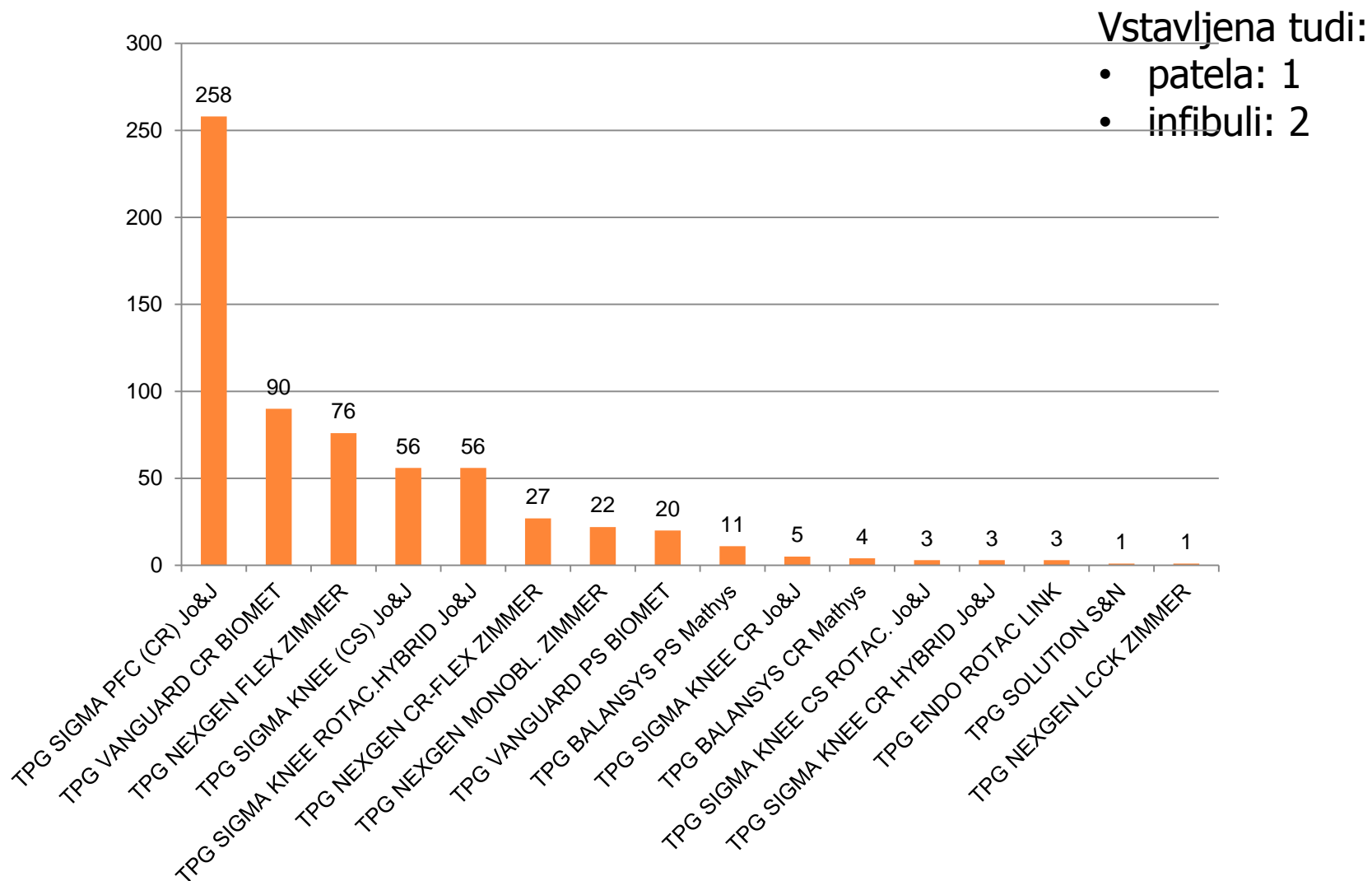


Unikondilar Knee Prostheses from 2002 to 2013

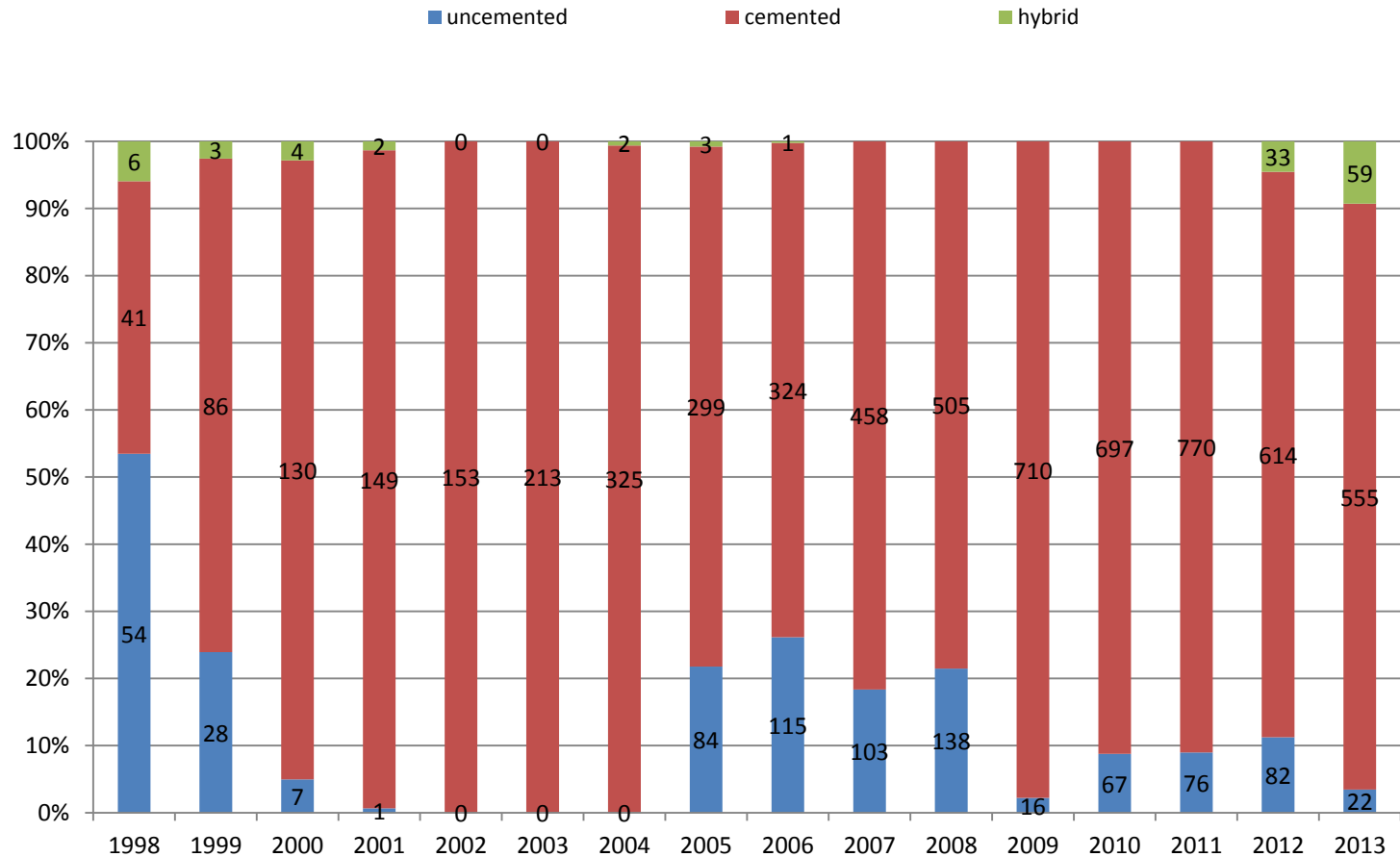
Parcialne kolenske proteze



Primary TKR in 2013, sum 636



Knee replacement by use of cement



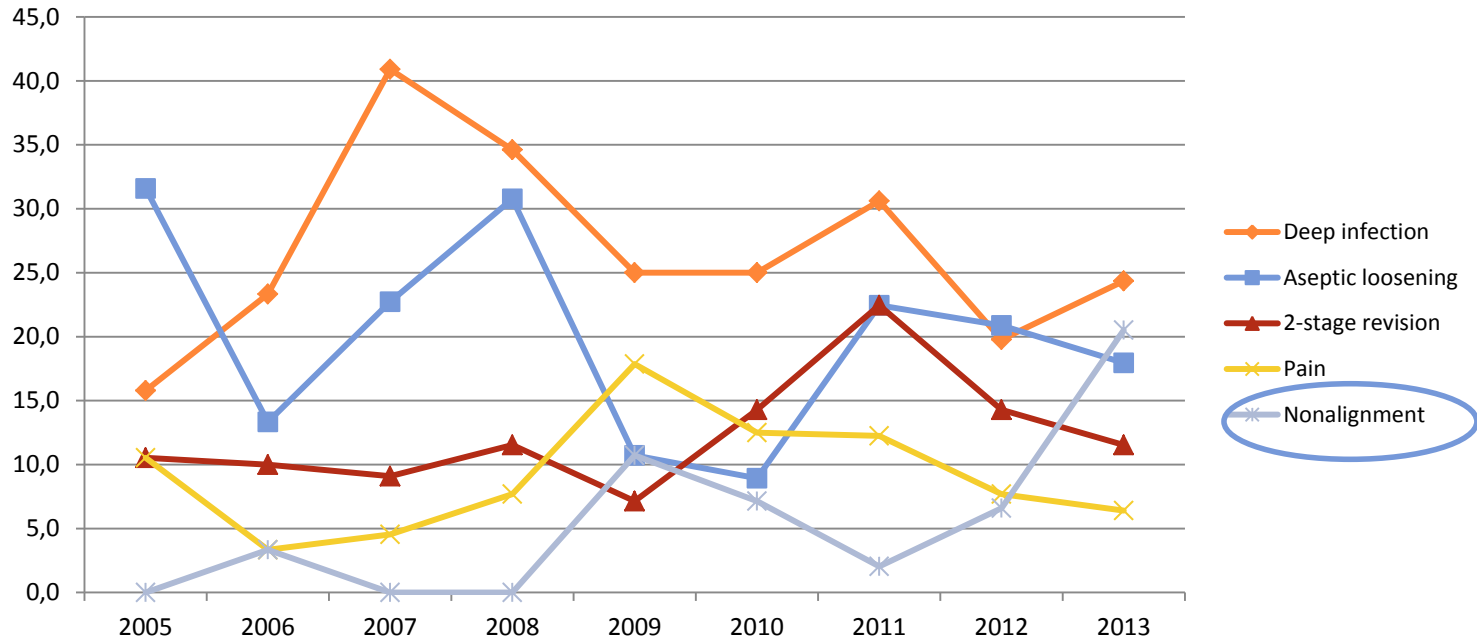
REVISION OPERATIONS OF KNEE JOINT REPLACEMENTS

In 2013: 78 revisions at 68 patients

Reasons for revision knee vs. hips 2002-2013

period 2002-2013	Knee(%)	Hips(%)
Deep infection	24,83	11,27
Aseptic loosening	19,08	61,99
Nonalignment, malposition	18,85	0,0
2-stage revision	12,87	5,49
Pain	8,51	2,02
OA of other compartment	6,21	0,00
Other (wear of PE, ...)	5,98	3,04
Dislocation	1,38	4,62
Periprosthetic fracture	1,15	6,69
Implant broken	1,15	2,64
Osteolysis	0,00	2,26

Reasons for revision TKR from 2005 to 2013 (%)



Revisions per 100 observed component years

Year	Mean Follow up period (years)	Revision rate	Number primary cases	Number of all revisions	Number of first revisions in this FU period	Revision rate for revisions in this FU period	Observed component years	Revisions per 100 observed component years
2002	0,46	5,46	173	10	0	0,00	79,81	0,00
2003	0,88	3,58	404	15	0	0,00	354,16	0,00
2004	1,22	4,56	753	36	6	0,76	922,31	0,65
2005	1,60	4,49	1171	55	12	0,98	1873,54	0,64
2006	2,03	4,95	1631	85	21	1,22	3305,12	0,64
2007	2,36	4,61	2214	107	29	1,25	5216,43	0,56
2008	2,69	4,40	2893	133	39	1,29	7771,63	0,50
2009	3,05	4,26	3615	161	54	1,43	11015,85	0,49
2010	3,43	4,72	4382	217	82	1,78	15008,65	0,55
2011	3,79	4,84	5227	266	99	1,80	19818,78	0,50
2012	4,27	5,66	5946	357	136	2,16	25414,18	0,54
2013	4,75	6,11	6680	435	172	2,42	31728,17	0,54

REVISION BURDEN – ALL REVISIONS

	RB (revision burden) = N° of revisions*100/(N° of primaries+ N° of revisions) in %	N° of revisions for infection*100 / (N° of primaries+ N° of revisions) in %
2002	5,46	1,09
2003	2,12	0,00
2004	5,68	0,81
2005	4,35	0,92
2006	6,12	1,22
2007	3,64	1,49
2008	3,69	1,28
2009	3,73	0,93
2010	6,80	1,46
2011	5,48	1,23
2012	11,23	1,98
2013	9,61	1,60
Average Valdotra	5,66	1,17
Norway 09	8,91	1,02
Slovakia 10	13,30	1,39

Revision rate for knee prostheses from 02 to 13

Name	Removed	All primary implanted	% revisions
Uni Parcial NexGen Zimmer	0	60	0,00
Sigma Knee HIBRID Jo&J	0	92	0,00
PFJ Sigma Jo&J	0	3	0,00
Balansys Mathys	0	15	0,00
Sigma Knee Jo&J	1	354	0,28
Vanguard Biomet	2	139	1,44
Solution S&N	20	1152	1,74
Sigma PFC Jo&J	28	1555	1,80
Nexgen Monobloc ZIMMER	14	710	1,97
Preservation Jo&J	1	40	2,50
AGC Biomet	19	747	2,54
Nexgen ZIMMER	36	962	3,74
Advance WRIGHT	15	300	5,00
Nexgen LCCK Zimmer	2	32	6,25
Endomodel LINK	3	42	7,14
Oxford Biomet	25	324	7,72
Genesis S&N	3	33	9,09

Acknowledgments to:

- the director of Valdoltra Orthopaedic Hospital Radoslav Marčan, dr. med., spec. ortop.
- all the orthopaedic surgeons, who perform knee arthroplasty in Valdoltra Hospital
- all other medical and administrative staff, who are involved in the process of registration in Valdoltra Arthroplasty Registry

